



**Putzmeister**



# Truck-mounted concrete pump M24

Small on space requirement but big on usefulness

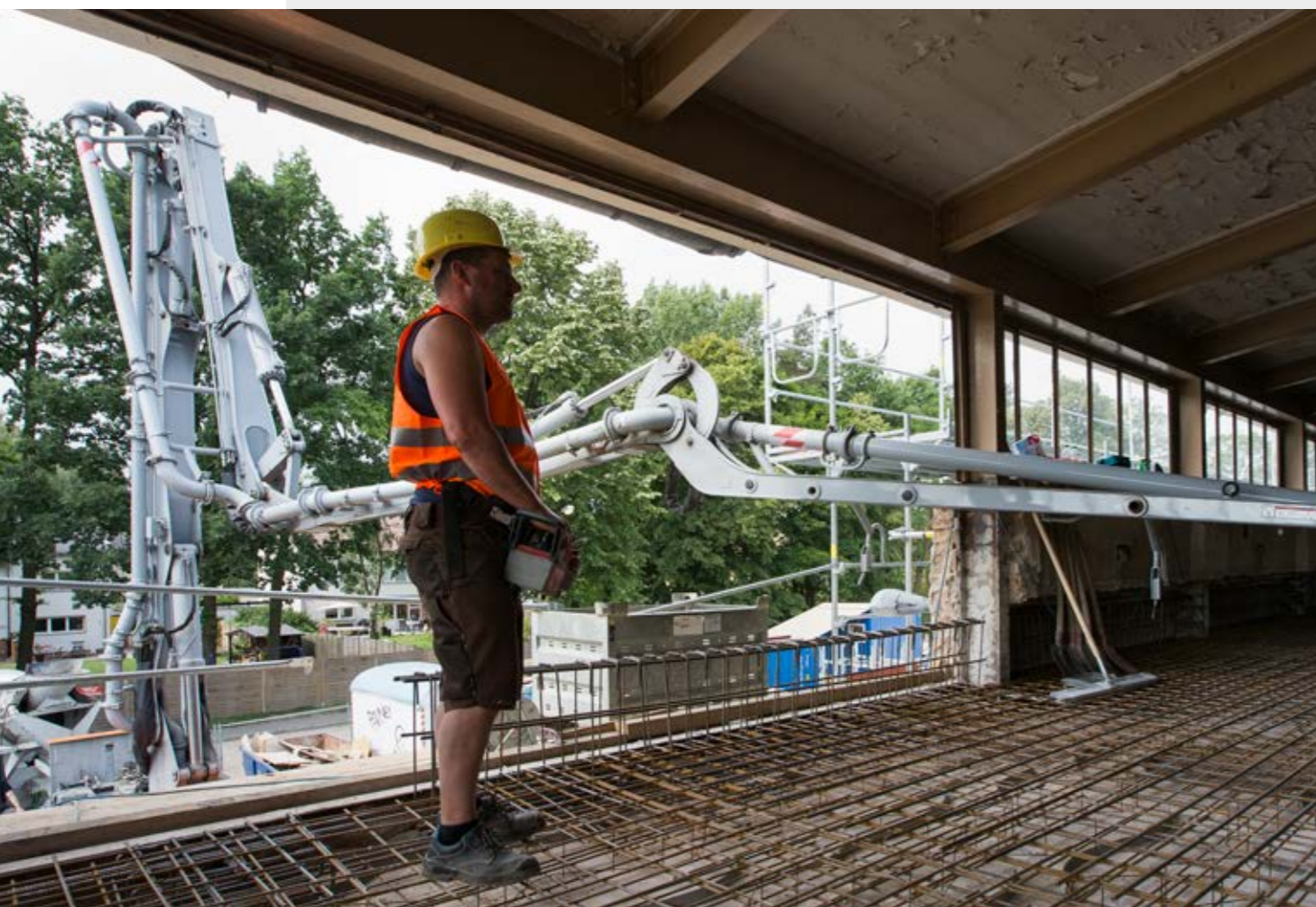
M24 – the specialist in low buildings,  
tunnels, under bridges, for renovations ...

... and on all small construction sites

### Concreting where space is limited thanks to its flexible boom

- Z-roll-fold system and large flex angle provide flexibility
- Excellent slip characteristics
- Concreting right up to the driver's cab
- No inaccessible areas
- Low unfolding height: 4.9 m
- Overcomes the most difficult of space restrictions
- Quickly ready for concreting
- Boom can be extended forwards\*

\* Only according to operating instructions and for certain vehicle specifications



### TRD – optimum stability where space is limited

- Tried and tested diagonal front support with supports extending 5.6 m
- Extent of rear supports only slightly wider than the vehicle (2.6 m)
- Solid rearward diagonal support for optimum stability and smooth pumping
- Therefore ideal where space is restricted
- Short set-up times
- Reliable optimised construction thanks to more than 30 years of experience in the design of TRD support systems

### Chassis and truck superstructures – manoeuvrable and versatile

- Normal vehicle travel on 2 or 3 axles
- No overhanging boom
- Truck superstructure on 2-axle chassis available from a variety of manufacturers
- Truck superstructure on 3-axle chassis offers many advantages:
  - more space on the loading platform
  - **option to mount containers for pipes, hoses and a comprehensive range of accessories**
  - Increased ergonomics thanks to hydraulically retractable magazines (optionally available)
  - higher working load
  - less stress on the chassis
  - easy to manoeuvre thanks to its short wheelbase
  - use of pumps with an output from 140 m<sup>3</sup>/h
  - optional 4.4 m front supports (following technical clarification)



# The placing boom – concreting in confined spaces thanks to the flexible mast

## This is outstanding: Folded out at just 4.9 m

M24, this is about a 24 m vertical reach distributed over 4 arms and compactly located in Z-roll-folding. With excellent slip into building properties thanks to low unfolding height this boom opens up a wide range of applications such as the concreting of halls or bridges. The mast can also be placed in front of the cab and the concrete pump can then be driven into a hall and unfolded. The 4-arm boom can be folded out quickly and thus saves valuable working time and copes with the most difficult space conditions.

It is also advantageous that the mast is very robust. Furthermore, it enables a user-friendly handling due to its direct response, even in confined spaces.

## Work more accurately – even blindfolded

The fully electronic placing boom control EBC (Ergonic® Boom Control) available as an option ensures noticeable relief of the operator. The convenient joystick allows extremely smooth handling of the boom in one-handed operation. This is because EBC dampens the boom vibrations and ensures that the end hose remains at a constant height during a horizontal movement.

Thanks to a wide range of additional settings of EBC the operator can limit the working area or block certain arm positions. This makes work easier and increases operating safety.



## The flexible boom at a glance

- Around 24 m vertical reach with 4 arms in Z-roll-folding
- Concreting right up to the cab
- No dead zones
- Direct response characteristics of the boom control
- Standard pump line DN 125/5.5"
- EBC (optional) for vibration damping, one-handed control and restriction of workspace
- Low unfolding height of 4.9 m
- Driving with the mast forward possible \*

\* Procedure only according to operating instructions and specific vehicle specification



# The concrete pump – clever interaction of all components

## Switching centre for maximum efficiency

If our concrete pumps form the heart of our machines, then Ergonic® 2.0 system is the head. As a switching centre, the microprocessor-supported control systems regulate the functions of concrete pumps, truck mixers and PUMI®.

Increased efficiency, reduced costs and greater flexibility – these are the results of Putzmeister machines with Ergonic® 2.0 overcoming the difficulties of day-to-day work on the job site.



## The new radio remote control – work 2.0

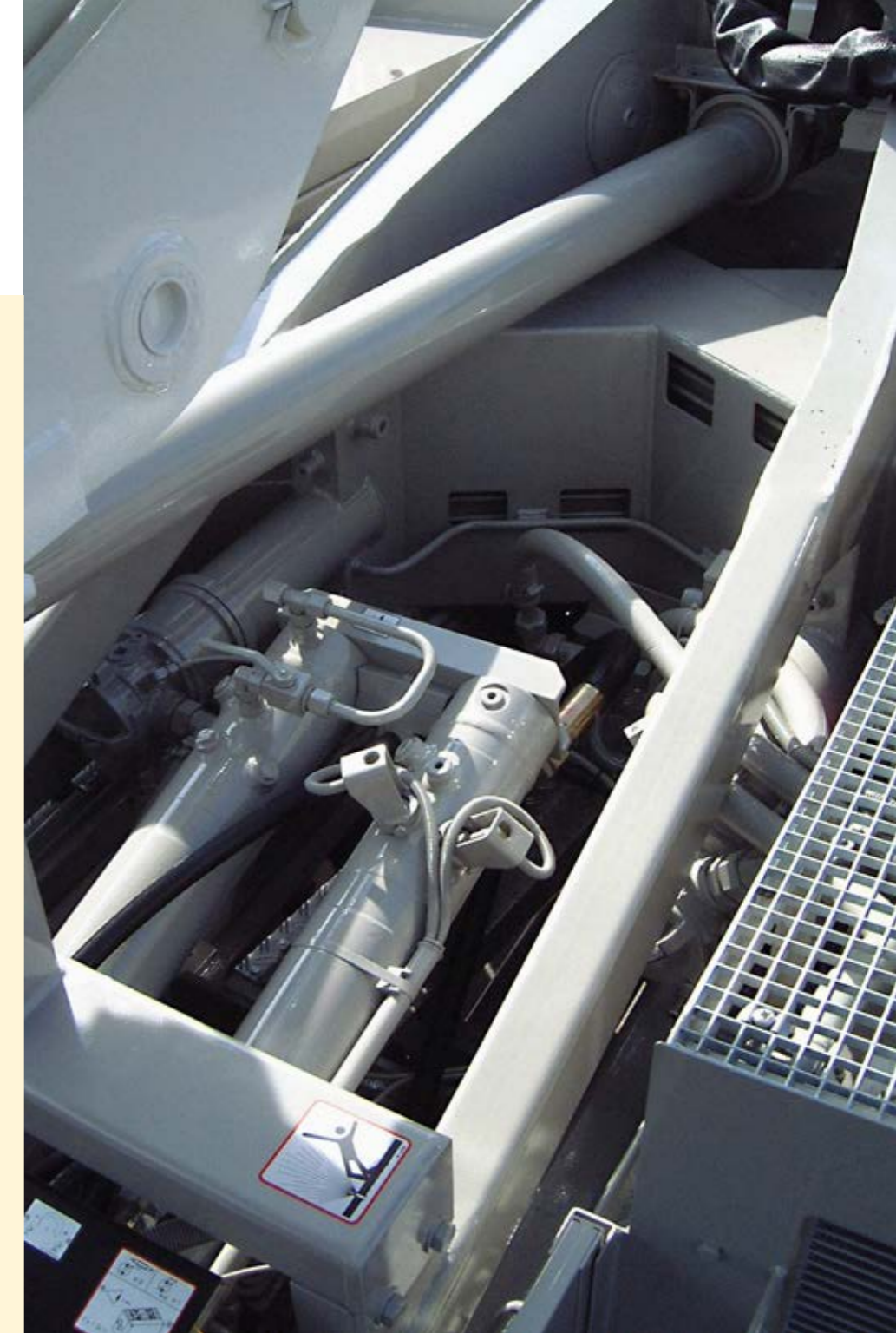
The extremely robust radio remote control is considerably lighter in the hand, owing not only to its reduced weight, but also the well thought-out ergonomic design. All displays can be optimally read on the larger, high-resolution colour screen.

A Li-ion battery with a longer life and minimal self-discharge supplies the remote control with energy for an entire working day. Alternatively the remote control can be operated using a cable and supplied with current.

With Ergonic® 2.0, specific machine settings are transferred easily using a chip card. The machine operator has constant access to all the information about the machine at their workplace, shown on the colour display of the radio remote control.

## The pump at a glance

- **Pump geometry is optimally** coordinated to all common types of concrete
- **Service-friendly control system** with free flow hydraulics and thus consistently high oil quality
- **Particularly wear-resistant** design of S transfer tube switch, which guarantees long service life
- **Optimised hopper** (screwed-in grille, improved shape and optimised S transfer tube storage)
- **Agitator safety shutdown** via RFID (Radio Frequency Identification), a detection system using electromagnetic waves, including start-up protection
- **Smooth, optimised pumping** with EPS and EOC, protects the pump and the vehicle
- **Optimised switchover procedure** with SN control system and Push Over avoids wear-intensive pressure peaks
- **Convenient and simple operation** with Ergonic® 2.0, the latest concept for control hardware and software from Putzmeister
- **Minimum operating costs** thanks to maintenance-free components, avoidance of special components and good accessibility
- **Easy replacement of components** due to screw concept, e.g. support cylinder
- **Automatic agitator** direction of rotation corresponds to pumping direction



## Pumps

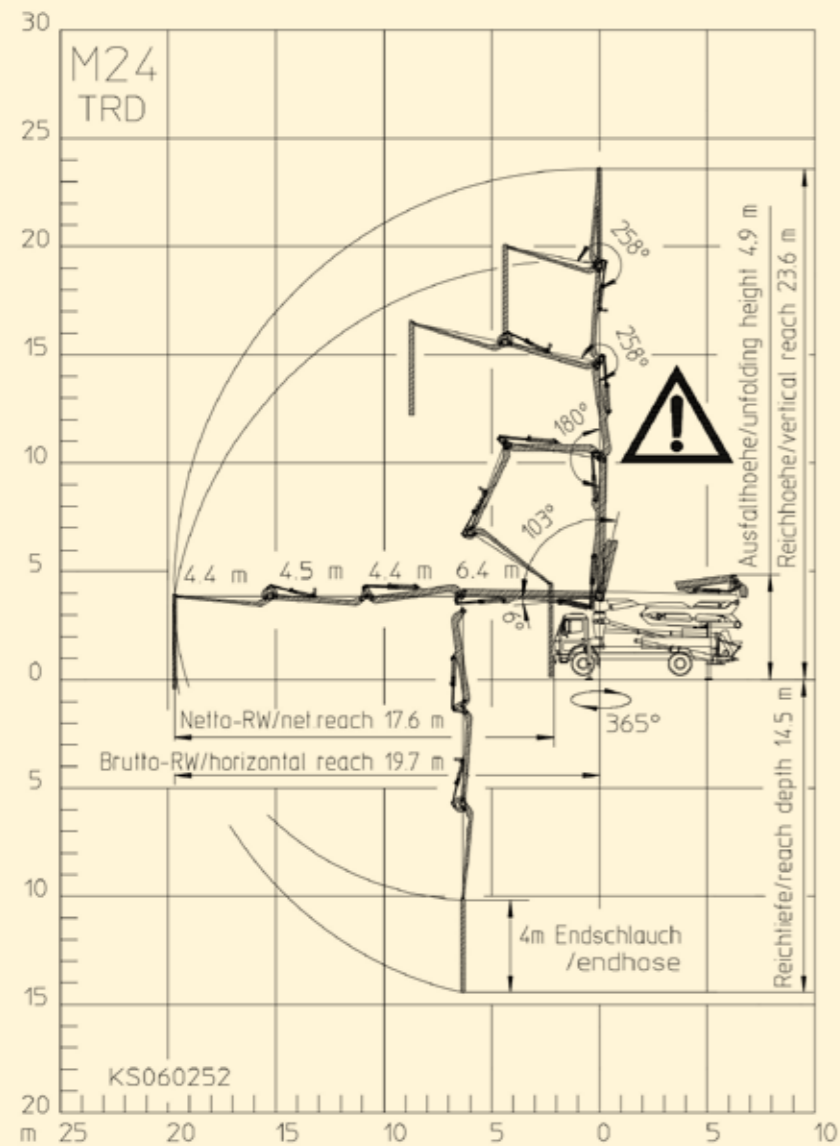
Number axles	Type	Output* m³/h	Pressure* bar	Stroke mm	Cylinder Ø mm	Stroke/min
2	...09 H	90	78	1400	230	26
2	...11 H	110	78	1400	230	32
2	...11 H LS	110	85	1400	250	27
3	...16 H	160/108*	85/130*	2100	230	31/21*
3	...16 H LS	160	85	2100	250	26

All data represent theoretical maximum values.  
\* Rod/piston side. Max. delivery rates and max. delivery pressures cannot be operated at the same time.



# Technical Data

## M24



### Placing boom

<b>Folding system</b>	4-Arm Z-roll-folding (ZR)
<b>Vertical reach</b>	23.6 m
<b>Horizontal reach</b>	19.7 m gross
<b>Depth of reach</b>	14.5 m
<b>Unfolding height</b>	4.9 m
<b>End hose length</b>	4 m
<b>Delivery lines</b>	DN 125, max. 85 bar
<b>Slewing circle</b>	365°

### General

<b>Support width</b>	<b>front / rear</b>
	5.6 m (4.4 m*) / 2.6 m
<b>Overall length</b>	8.8 m
<b>Height</b>	3.8 m

### Equipment lines

To make it easier to select from the numerous configuration options, three comprehensive equipment lines, as well as a few option packages, are available.

#### Standard line

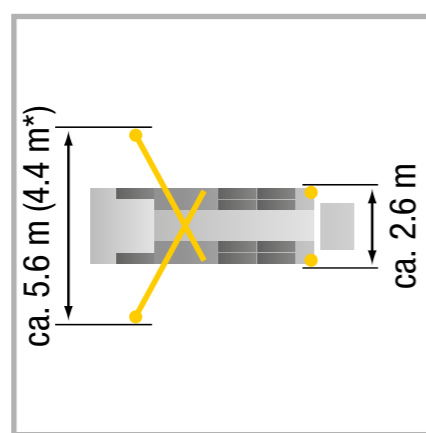
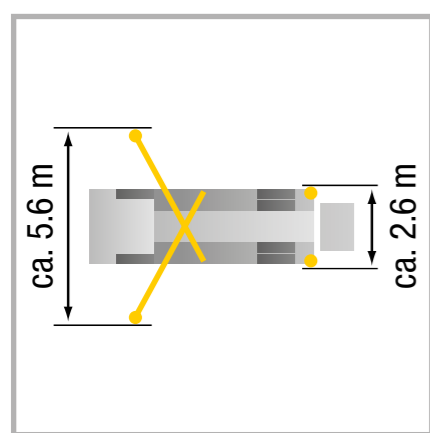
This equipment includes components which Putzmeister considers to be an economic standard for working efficiently and safely. Combined with the "German/EU road use approval" option package, the machine is ready for use throughout Europe.

#### High line

The high line provides easier operation, reduced maintenance costs and increased lighting comfort.

#### Exclusive line

This line represents the highest equipment level offered by Putzmeister. It includes selected premium components.



\* Optional, on 3-axle chassis (following technical clarification)

### Added value for the same money

In addition to providing greater transparency and easier ordering, the option packages are cheaper than ordering individual options.

- **German/EU road use approval kit** includes all the necessary equipment for approving the machine in the EU
- **Lighting kit** also covers the lighting included in the scope of standard equipment
- **Operating kit 1 – EBC Basis** reduces the vibrations for smoother boom movement
- **Operating kit 2 – EBC Plus** offers a comfort function for boom control
- **Cleaning kit** includes various components which make cleaning the machine easier
- **Camera kit 1 to 3** includes various camera systems, from the reversing camera to the 360° camera
- **Driver kit 1** includes options for increasing the horizontal reach
- **Further individual options** are also available

# Build on Putzmeister – in service, parts, training

## Everything that sets service apart

Swift assistance, meaningful advice and a reliable supply of genuine Putzmeister accessories and parts – in over 120 countries worldwide. This is what we at Putzmeister understand as first-class service.

### Ideally placed to support you

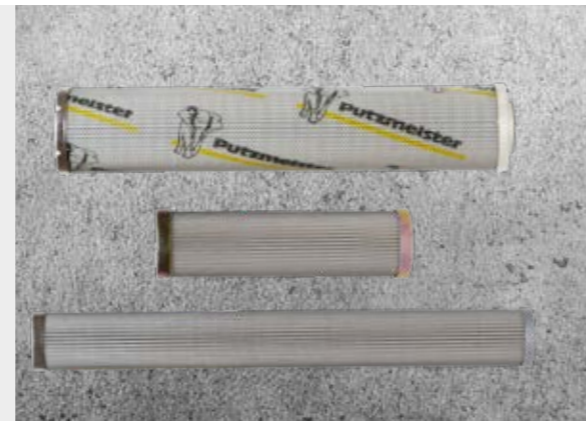
We train our service technicians continuously, provide a close-knit information network and the latest equipment and consistently strive to meet our customers' needs.

Thanks to state-of-the-art technology, our employees have all the relevant technical information about your machine at their fingertips, should the need arise. Allowing us to provide you with the best possible support for emergencies, repairs or preventive maintenance.



### Genuine parts for maximum availability

It goes without saying that we use only genuine Putzmeister parts in our workshops. This is the only way to guarantee consistent quality, checked for interoperability. And you can be absolutely sure that your machine meets the tough requirements with maximum performance and availability.



### Excellent in quality and customer proximity

In case of need, you have two options: Either the service team visits you or you take your machine to one of our service workshops. The latest tools, software analysis solutions and genuine parts ensure that your machine is operable again immediately.

All Putzmeister workshops and the workshops of our international Putzmeister partners meet our high-quality standard. Especially when it comes to manufacturer's inspections and acceptance procedures in accordance with specifications.



### Induction at handover – everything correct from the outset

So you and your machinist can adapt perfectly to all special features and innovations

### Customer training – benefit from expert knowledge

Practice-oriented learning offers many benefits: Your staff master the machine with all its special features, use the machine to optimum effect, reduce operating costs and avoid operating errors.

### 100 hours of customer service – avoid potential sources of error

With this customer service you receive a status report on your concrete pump as per the Putzmeister service plan.

## Our services for cost-effective work

The Putzmeister service support points offer you these services – all provided by our experienced service staff:

### Mandatory machine inspection – calculable costs instead of incalculable failures

Visual inspection and functional check of components for 100 % safety. The hydraulic system with cylinders, electrical system and core pump are also inspected.

### 500 hours of customer service – protect your investment, retain your value

Our technical customer service team is the number one choice for checking the safety and wear of your machine. You receive a status report for this, too.

## Our range of training courses and seminars:

### For concrete pump operators

- Training and development seminars on concrete pumps
- Training and development seminars on PUMI with piston and rotor pumps
- Regional / company seminars (in your region or on your premises)

### For concrete pump mechanics

- Training and development seminars on concrete pump

### For concrete pump machinists and mechanics

- Practical days in Aichtal
- Training: Handover and induction, on-the-job training

### For workshop managers and foremen

- Overview of current developments in Putzmeister concrete pumps
- Qualification at the customer workshops for requisite maintenance work

Further information can be found at: [www.pm-akademie.de](http://www.pm-akademie.de)



# The M24 at a glance

## Benefits for you at a glance

- Around 24 m vertical reach with 4 arms in Z-roll-folding
- Minimum unfolding height of 4.9 m
- Extensive radius for tasks in halls, under bridges, underpasses or when building multi-storey buildings
- Small support area: 5.60 / 4.40 m at the front, 2.60 m at the rear
- Pump geometry adapted optimally to all common types of concrete
- Service-friendly control system and consistently high oil quality thanks to free flow hydraulics
- Particularly wear-resistant design of S-tube switch, which guarantees long service life
- User-friendly hopper
- Smooth, optimized pumping with EPS and EOC, protects the pump and vehicle



Please note: The figures in the brochure may differ from the series scope of the machines.  
Further brochures: Ergonic® BP 4690



## Putzmeister Concrete Pumps GmbH

Max-Eyth-Straße 10 · 72631 Aichtal / Germany  
P.O.Box 2152 · 72629 Aichtal / Germany  
Phone +49 7127 599-0 · Fax +49 7127 599-520  
pmw@putzmeister.com · www.putzmeister.com

